

Extreme (1)

Material: 100 % Trevira CS

Scheuertouren: 100.000 Martindale

Lichtechtheit: 6 - 7 (max. 8)

Brandschutznormen: EN 1021 T 1 & 2, DIN 4102 BA, BS 7176, HF - P - 92 - 503M1

Reibechtheit: 4 - 5 trocken/nass



EX24 braun



EX34 hellgrün



EX52 gelb



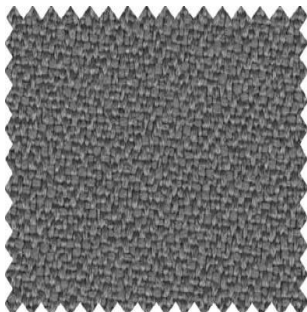
EX54 orange



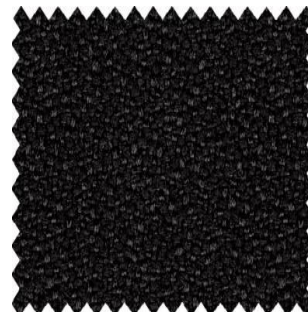
EX60 rot



EX83 dunkelblau



EX75 grau



EX77 anthrazit



EX82 blau



EX85 schwarz