

Extreme (1)

Material: 100 % Trevira CS

Scheuertouren: 100.000 Martindale

Lichtechtheit: 6 - 7 (max. 8)

Brandschutznormen: EN 1021 T 1 & 2, DIN 4102 BA, BS 7176, HF – P – 92 – 503M1

Reibechtheit: 4 – 5 trocken/nass



EX02 weiss



EX24 braun



EX34 hellgrün



EX37 petrol



EX52 gelb



EX54 orange



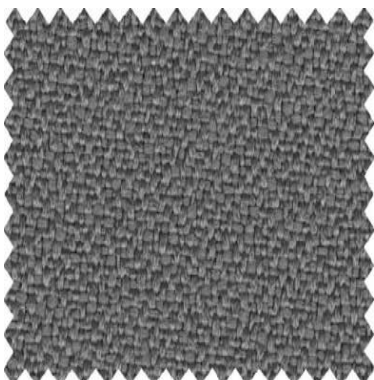
EX60 rot



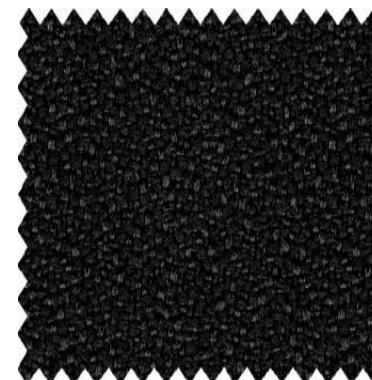
EX63 lila



EX65 pink



EX75 grau



EX77 anthrazit



EX82 blau

Extreme (1)

Material: 100 % Trevira CS

Scheuertouren: 100.000 Martindale

Lichtechtheit: 6 - 7 (max. 8)

Brandschutznormen: EN 1021 T 1 & 2, DIN 4102 BA, BS 7176, HF – P – 92 – 503M1

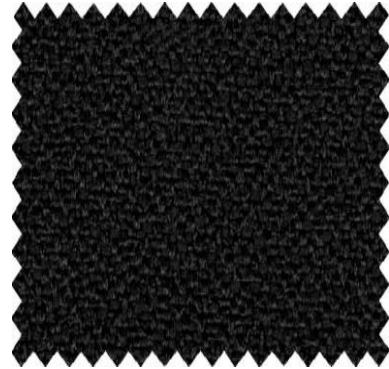
Reibechtheit: 4 – 5 trocken/nass



EX 80 hellblau



EX83 dunkelblau



EX85 schwarz